



Keuper Gas Storage Project

Appendix 9A – Baseline Noise Assessment

PREPARED FOR
Keuper Gas Storage
Limited

DATE
September 2025

REFERENCE
EN0310001



CONTENTS

| | |
|--|----------|
| 9. NOISE SURVEY SUMMARY | 1 |
| 9.1.2 Noise Monitoring Location Descriptions | 2 |
| 9.1.3 Equipment Used | 5 |
| 9.1.4 Weather Conditions | 5 |
| 9.1.5 Other data Exclusions | 5 |
| 9.1.6 Detailed Results and Analysis | 6 |

LIST OF TABLES

| | |
|---|----|
| TABLE 9.1 – NOISE MONITORING RESULTS SUMMARY | 1 |
| TABLE 9.2 – NOISE MONITORING LOCATION DESCRIPTIONS | 3 |
| TABLE 9.3 – EQUIPMENT DETAILS | 5 |
| TABLE 9.5 – AMBIENT SOUND LEVEL FOR THE CONSTRUCTION NOISE ASSESSMENT AT NML01 | 7 |
| TABLE 9.6 – AMBIENT SOUND LEVEL FOR THE CONSTRUCTION NOISE ASSESSMENT AT NML02 | 11 |
| TABLE 9.7 – AMBIENT SOUND LEVEL FOR THE CONSTRUCTION NOISE ASSESSMENT AT NML03 | 15 |
| TABLE 9.8 – AMBIENT SOUND LEVEL FOR THE CONSTRUCTION NOISE ASSESSMENT AT NML04 | 19 |
| TABLE 9.9 – AMBIENT SOUND LEVEL FOR THE CONSTRUCTION NOISE ASSESSMENT AT NML05 | 23 |
| TABLE 9.10 – AMBIENT SOUND LEVEL FOR THE CONSTRUCTION NOISE ASSESSMENT AT NML06 | 27 |

LIST OF FIGURES

| | |
|--|----|
| FIGURE 9.1 – NOISE MONITORING LOCATIONS | 4 |
| FIGURE 9.2 – PHOTO OF EQUIPMENT SETUP AT NML01 | 6 |
| FIGURE 9.3 – NOISE MONITORING RESULTS AT NML01 | 8 |
| FIGURE 9.4 – DISTRIBUTION OF BACKGROUND SOUND LEVELS DURING THE DAY (07:00-23:00) AND NIGHT (23:00-07:00) AT NML01 | 9 |
| FIGURE 9.5 – PHOTO OF EQUIPMENT SETUP AT NML02 | 10 |
| FIGURE 9.6 – NOISE MONITORING RESULTS AT NML02 | 12 |
| FIGURE 9.7 – DISTRIBUTION OF BACKGROUND SOUND LEVELS DURING THE DAY (07:00-23:00) AND NIGHT (23:00-07:00) AT NML02 | 13 |
| FIGURE 9.8 – PHOTO OF EQUIPMENT SETUP AT NML03 | 14 |
| FIGURE 9.9 – NOISE MONITORING RESULTS AT NML03 | 16 |

| | |
|---|----|
| FIGURE 9.10 – DISTRIBUTION OF BACKGROUND SOUND LEVELS DURING THE DAY (07:00-23:00) AND NIGHT (23:00-07:00) AT NML03 | 17 |
| FIGURE 9.11 – PHOTO OF EQUIPMENT SETUP AT NML04 | 18 |
| FIGURE 9.12 – NOISE MONITORING RESULTS AT NML04 | 20 |
| FIGURE 9.13 – DISTRIBUTION OF BACKGROUND SOUND LEVELS DURING THE DAY (07:00-23:00) AND NIGHT (23:00-07:00) AT NML04 | 21 |
| FIGURE 9.14 – PHOTO OF EQUIPMENT SETUP AT NML05 | 22 |
| FIGURE 9.15 – NOISE MONITORING RESULTS AT NML05 | 24 |
| FIGURE 9.16 – DISTRIBUTION OF BACKGROUND SOUND LEVELS DURING THE DAY (07:00-23:00) AND NIGHT (23:00-07:00) AT NML05 | 25 |
| FIGURE 9.17 – PHOTO OF EQUIPMENT SETUP AT NML06 | 26 |
| FIGURE 9.18 – NOISE MONITORING RESULTS AT NML06 | 28 |
| FIGURE 9.19 – DISTRIBUTION OF BACKGROUND SOUND LEVELS DURING THE DAY (07:00-23:00) AND NIGHT (23:00-07:00) AT NML06 | 29 |

ACRONYMS AND ABBREVIATIONS

| Acronym | Description |
|-------------|--|
| DCO | Development Consent Order |
| EIA | Environmental Impact Assessment |
| ERM | Environmental Resources Management |
| ES | Environmental Statement |
| KGSL | Keuper Gas Storage Limited |
| KGSP | Keuper Gas Storage Project |
| MC | Material Change |
| PEIR | Preliminary Environmental Information Report |
| $L_{Aeq,T}$ | Equivalent Continuous A-weighted Sound Pressure Level over a specified time period (T) |
| L_{Amax} | Maximum A-weighted sound level measured over a specific time period (T). |
| $L_{A90,T}$ | A-weighted sound pressure level that is exceeded for 90% of a given measurement period (T) |

| Acronym | Description |
|---------------------|---|
| dBA (A-weighted) | Sound measurement that has been adjusted to reflect how the human ear perceives loudness across different frequencies |

9. NOISE SURVEY SUMMARY

- 9.1.1.1 This appendix presents details of the data recorded during the noise survey and the analysis that has been carried out to derive baseline noise levels that were used in the assessment.
- 9.1.1.2 Noise monitoring was carried out from 29th July to 6th August 2025. The noise survey consisted of unattended noise monitoring across six locations set to measure: $L_{Aeq,T}$, L_{Amax} and $L_{A90,T}$.
- 9.1.1.3 A weather station was deployed at Noise Monitoring Location 02 (NML02) to measure wind speed and rainfall. Noise measurements captured during periods of wind speeds above 5 m/s and/or rainfall have been excluded from the data analysis.
- 9.1.1.4 A summary of the results has been provided in **Table 9.1**. Details of the monitoring location descriptions, equipment used, weather conditions and data analysis are provided in the sections that follow.

TABLE 9.1 – NOISE MONITORING RESULTS SUMMARY

| Noise monitoring location | Ambient Sound Level $L_{Aeq,T}$ [dB] ^a | | | Representative Background Sound Level $L_{A90,T}$ [dB] | |
|---------------------------|---|----------------------------------|--------------------|--|--------------------|
| | Day ^b | Evenings & Weekends ^c | Night ^d | Day ^e | Night ^f |
| NML01 | 59 | 56 | 53 | 50 | 33 |
| NML02 | 56 | 51 | 49 | 45 | 34 |
| NML03 | 56 | 51 | 49 | 38 | 31 |
| NML04 | 53 | 48 | 47 | 36 | 30 |
| NML05 | 51 | 47 | 44 | 35 | 29 |
| NML06 | 53 | 48 | 45 | 38 | 30 |

Notes:

^a Façade levels (the measurement or calculation of sound levels at a specific distance in front of a building's façade). A of 3 dB is applied to account for the sound reflected from the façade.

^b Weekdays 07:00-19:00 and Saturday 07:00-13:00.

^c Weekdays, 19:00–23:00, Saturdays 13:00-23:00, and Sundays 07:00-23:00.

^d Every night 23:00-07:00.

^e Every day 07:00-23:00

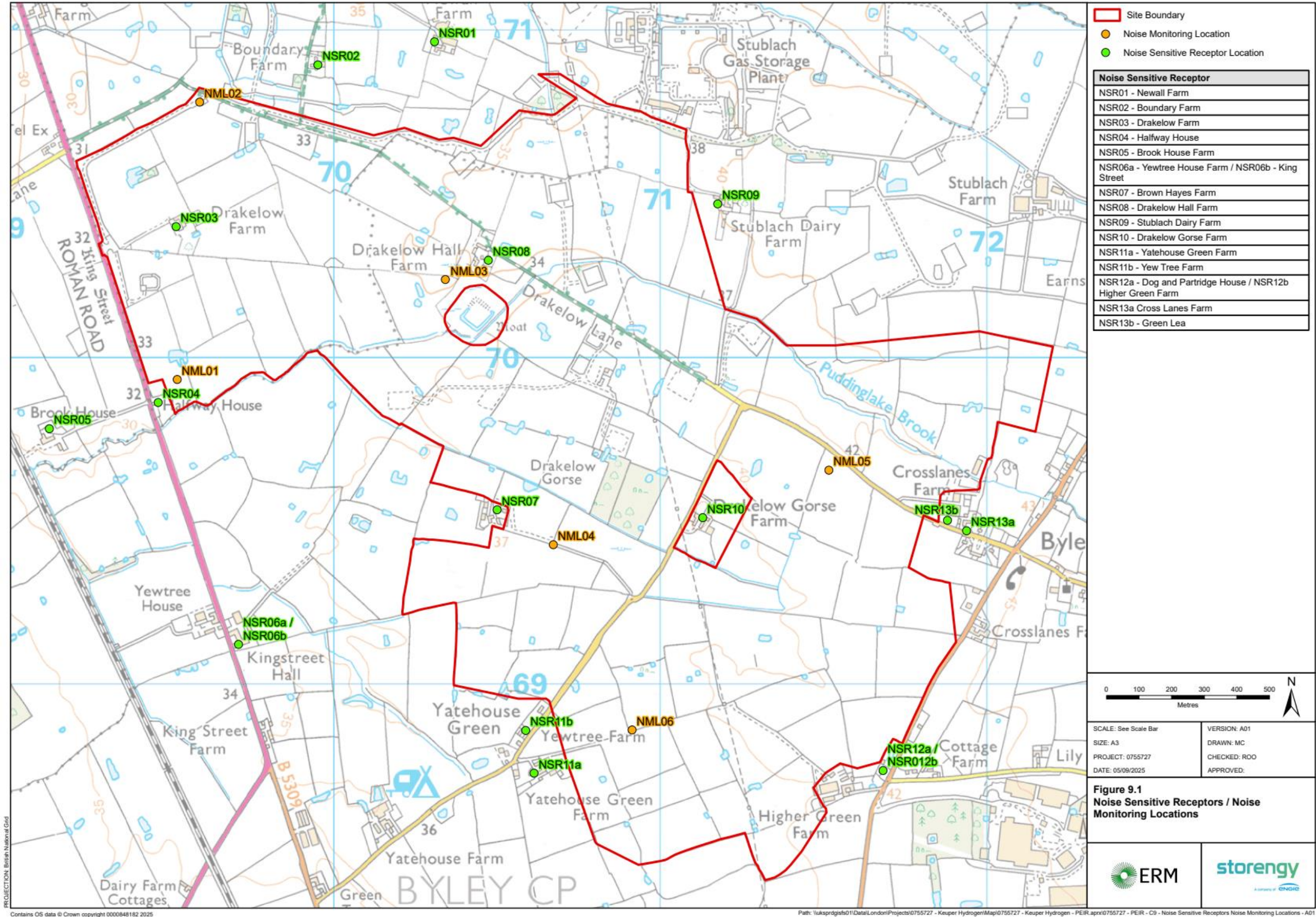
9.1.2 NOISE MONITORING LOCATION DESCRIPTIONS

- 9.1.2.1 A consultation email was sent to Cheshire and West Chester Council (the LPA) on 25th June 2025 setting out the proposed noise monitoring locations. Alternative monitoring locations were selected in some instances whilst onsite due to the site conditions. The alternative locations were observed to consist of a similar noise environment as those proposed to the LPA and therefore considered acceptable.
- 9.1.2.2 Descriptions of the monitoring locations are presented in **Table 9.2**. The locations of the proposed and actual measurement locations are shown in **Figure 9.1**.

TABLE 9.2 – NOISE MONITORING LOCATION DESCRIPTIONS

| Location | Representative Receptor | Installation Description | Observations during Installation |
|----------|---|--|--|
| NML01 | NSR04 Halfway House, NSR05 Brook House, NSR06a Yewtree House NSR06b Kingstreet | Equipment installed within land parcel between Halfway House and the Proposed Development GPP more than 3 m away from reflective surfaces and 1.5 m above ground. | Noise levels are dominated by road traffic along King St. Other notable noise sources include birdsong and occasional aircraft passes. |
| NML02 | NSR01 Newall Farm NSR02 Boundary Farm, NSR03 Drakelow Farm | Equipment installed along access road to the Storengy Site offices. Microphone installed at 1.5 m above ground. The weather station was also installed in this location. | Noise levels are dominated by road traffic along King St. Noise from car passes along the access road was also noted, however these were observed to be infrequent and did not affect overall measurement results. |
| NML03 | NSR08 Drakelow Hall Farm, NSR09 Stublach Dairy Farm | Equipment installed more than 2 m away from reflective surfaces. Microphone installed at 1.5 m above ground. | Audible noise sources during installation include distant road traffic, birdsong and leaves rustling in the wind. |
| NML04 | NSR07 Brownhayes Farm NSR10 Drakelow Gorse Farm | Equipment installed off the access road leading to Brown Hayes Farm. Microphone installed 1.5 m at above ground. | Audible noise sources during installation include distant road traffic, birdsong, occasional plane passes. No car passes along the access road were observed during installation. |
| NML05 | NSR13a Crosslanes Farm NSR13b Green Lea | Microphone installed more than 3 m away from reflective surfaces and 1.5 m above ground. | Noise levels are dominated by road traffic along Drakelow Ln. |
| NML06 | NSR11a Yatehouse Green Farm NSR11b Yewtree Farm NSR12a Dog and Partridge Farm NSR12b Higher Green Farm | Microphone installed more than 3 m away from reflective surfaces and 1.5 m above ground. | Noise levels are dominated by road traffic along Yatehouse Ln and King St. |

FIGURE 9.1 – NOISE MONITORING LOCATIONS



9.1.3 EQUIPMENT USED

9.1.3.1 Details of the equipment used, including serial numbers are provided in **Table 9.3**.

TABLE 9.3 – EQUIPMENT DETAILS

| Equipment Type | Manufacturer | Model | Serial Number | Meas. Location |
|-------------------|-------------------|-------------|---------------|----------------|
| Sound Level Meter | Rion | NL-53 | 00452037 | NML01 |
| | | NL-52 | 510132 | NML02 |
| | | NL-52 | 520989 | NML03 |
| | | NL-52 | 1276547 | NML04 |
| | | NL-53 | 00452035 | NML05 |
| | | NL-52 | 510130 | NML06 |
| Calibrator | Rion | NC-70 | 35105087 | - |
| Weather Station | Davies & HoboWare | EnviroTrack | 22175775 | NML02 |

9.1.4 WEATHER CONDITIONS

9.1.4.1 The observed weather conditions were generally acceptable for acoustic measurement with short periods of rainfall. Noise measurements affected by rainfall and high wind speeds (>5 m/s) have been removed from the data analysis. The data exclusions account for approximately 25 instances of rainfall and/or high wind speeds during the 29th July, 30th July, 3rd August and 4th August. Exclusions are shown in the noise monitoring result graphs.

9.1.5 OTHER DATA EXCLUSIONS

9.1.5.1 Measurements affected by atypical noise sources have been excluded from the data analysis. Exclusions are shown in the noise monitoring result graphs.

9.1.6 DETAILED RESULTS AND ANALYSIS

NML01 – Halfway House, Brook House, Yewtree House and Kingstreet

- 9.1.6.2 **Figure 9.2** shows the monitoring equipment setup at NML01. **Figure 9.3** presents the 15-minute sound measurements logged over the survey period. Noise levels were monitored from 19:00 on 29th July until 11:30 on 6th August 2025.
- 9.1.6.3 **Table 9.4** presents the average daytime ambient sound levels for the construction assessment baseline. BS 5228-1:2009 + A1:2014 ABC construction noise level categories have been selected based on the logarithmic average of the ambient sound levels.
- 9.1.6.4 **Figure 9.4** presents the distribution of background $L_{A90,15\text{-minute}}$ sound levels over the day and night-time throughout the survey period. The adopted daytime and night-time $L_{A90,T}$ are 50 dB and 33 dB respectively for the noise sensitive receptors represented by NML01.

FIGURE 9.2 – PHOTO OF EQUIPMENT SETUP AT NML01



TABLE 9.4 – AMBIENT SOUND LEVEL FOR THE CONSTRUCTION NOISE ASSESSMENT AT NML01

| Day | Ambient Sound Level LAeq,T [dB] a | | |
|--------|-----------------------------------|-----------------------|---------|
| | Day b | Evenings & Weekends c | Night d |
| 29-Jul | - | 56 | 50 |
| 30-Jul | 58 | 54 | 52 |
| 31-Jul | 59 | 57 | 53 |
| 01-Aug | 57 | 55 | 53 |
| 02-Aug | 57 | 56 | 53 |
| 03-Aug | - | 57 | 51 |
| 04-Aug | 62 | 58 | 54 |
| 05-Aug | 61 | 57 | 56 |
| 06-Aug | 58 | - | 55 |

Notes:

^a Façade levels (the measurement or calculation of sound levels at a specific distance in front of a building's façade). A of 3 dB is applied to account for the sound reflected from the façade.

^b Weekdays 07:00-19:00 and Saturday 07:00-13:00.

^c Weekdays, 19:00-23:00, Saturdays 13:00-23:00, and Sundays 07:00-23:00.

FIGURE 9.3 – NOISE MONITORING RESULTS AT NML01

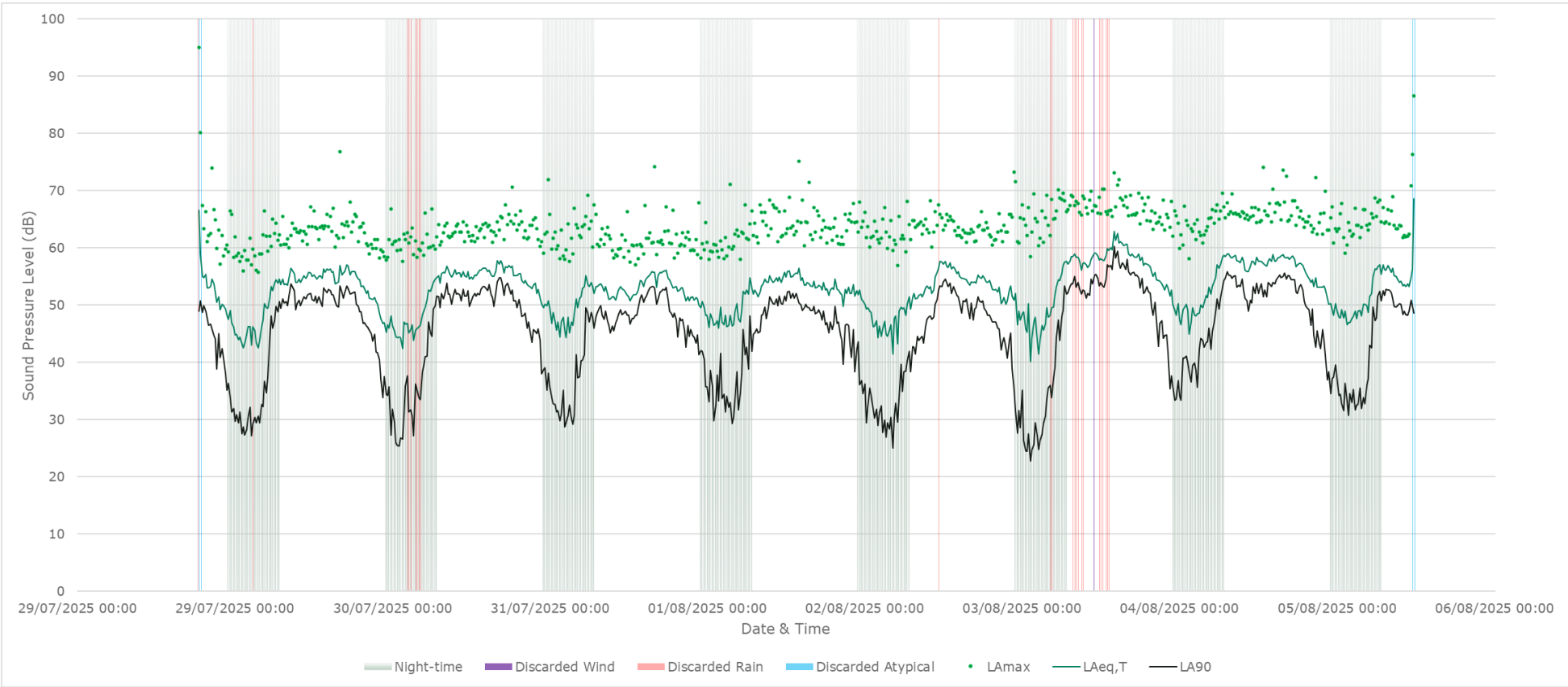
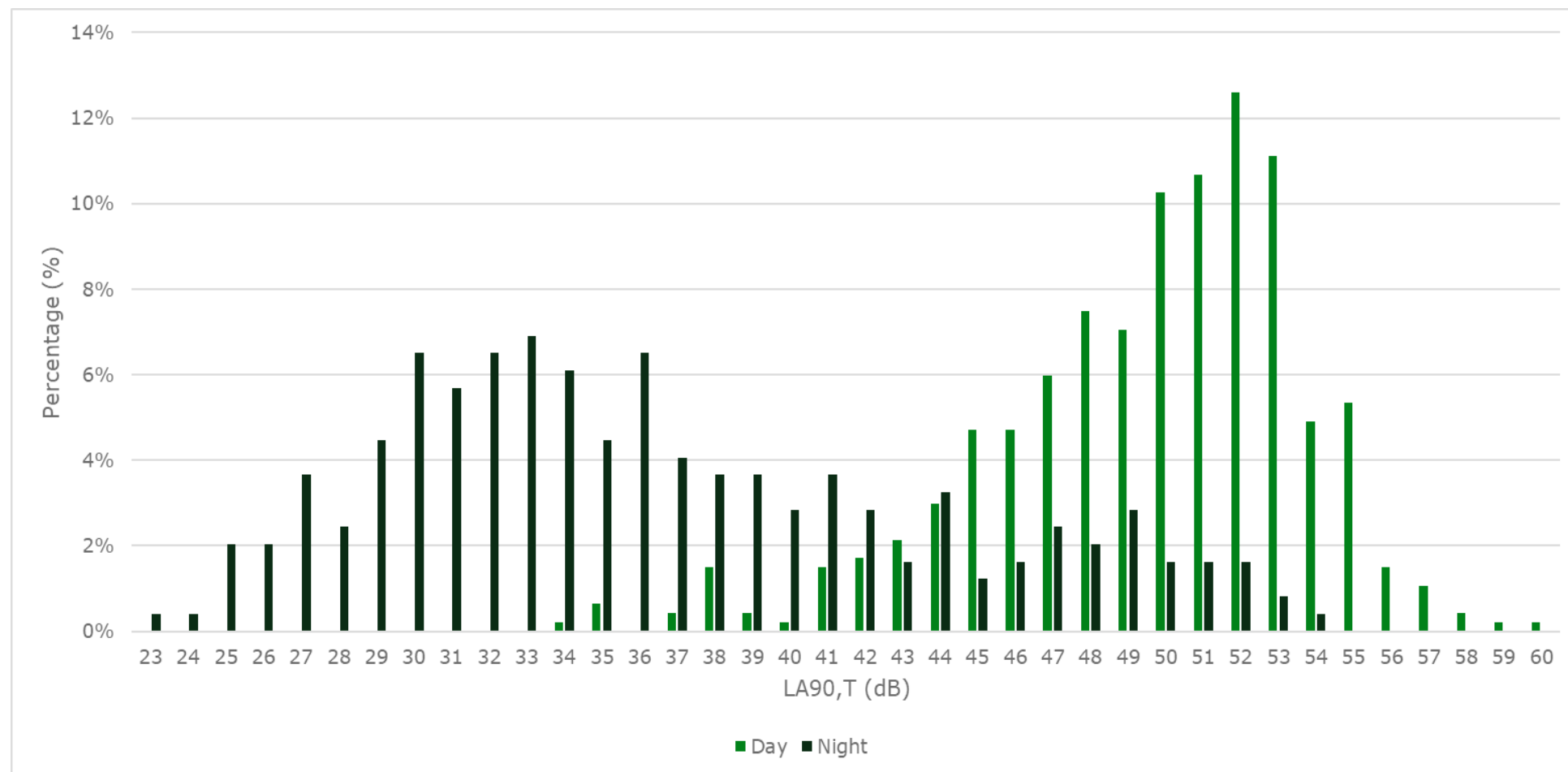


FIGURE 9.4 – DISTRIBUTION OF BACKGROUND SOUND LEVELS DURING THE DAY (07:00-23:00) AND NIGHT (23:00-07:00) AT NML01



NML02 – Newall Farm, Boundary Farm and Drakelow Farm

- 9.1.6.5 **Figure 9.5** shows the monitoring equipment setup at NML02 **Figure 9.6** presents the 15-minute sound measurements logged over the survey period. Noise levels were monitored from 13:45 on 29th July until 14:00 on 6th August 2025.
- 9.1.6.6**
- 9.1.6.7 **Table 9.5** presents the average daytime ambient sound levels for the construction assessment baseline. BS 5228-1:2009 + A1:2014 ABC construction noise level categories have been selected based on the logarithmic average of the ambient sound levels.
- 9.1.6.8 **Figure 9.7** presents the distribution of background $L_{A90,15\text{-minute}}$ sound levels over the day and night-time throughout the survey period. The adopted daytime and night-time $L_{A90,T}$ are 45 dB and 34 dB respectively for the noise sensitive receptors represented by NML02.

FIGURE 9.5 – PHOTO OF EQUIPMENT SETUP AT NML02



TABLE 9.5 – AMBIENT SOUND LEVEL FOR THE CONSTRUCTION NOISE ASSESSMENT AT NML02

| Day | Ambient Sound Level LAeq,T [dB] a | | |
|--------|-----------------------------------|-----------------------|---------|
| | Day b | Evenings & Weekends c | Night d |
| 29-Jul | 53 | 51 | 45 |
| 30-Jul | 55 | 48 | 49 |
| 31-Jul | 60 | 52 | 50 |
| 01-Aug | 53 | 51 | 49 |
| 02-Aug | 55 | 51 | 48 |
| 03-Aug | - | 52 | 46 |
| 04-Aug | 58 | 52 | 50 |
| 05-Aug | 57 | 52 | 52 |
| 06-Aug | 54 | - | 50 |

Notes:

^a Façade levels (the measurement or calculation of sound levels at a specific distance in front of a building's façade). A of 3 dB is applied to account for the sound reflected from the façade.

^b Weekdays 07:00-19:00 and Saturday 07:00-13:00.

^c Weekdays, 19:00-23:00, Saturdays 13:00-23:00, and Sundays 07:00-23:00.

FIGURE 9.6 – NOISE MONITORING RESULTS AT NML02

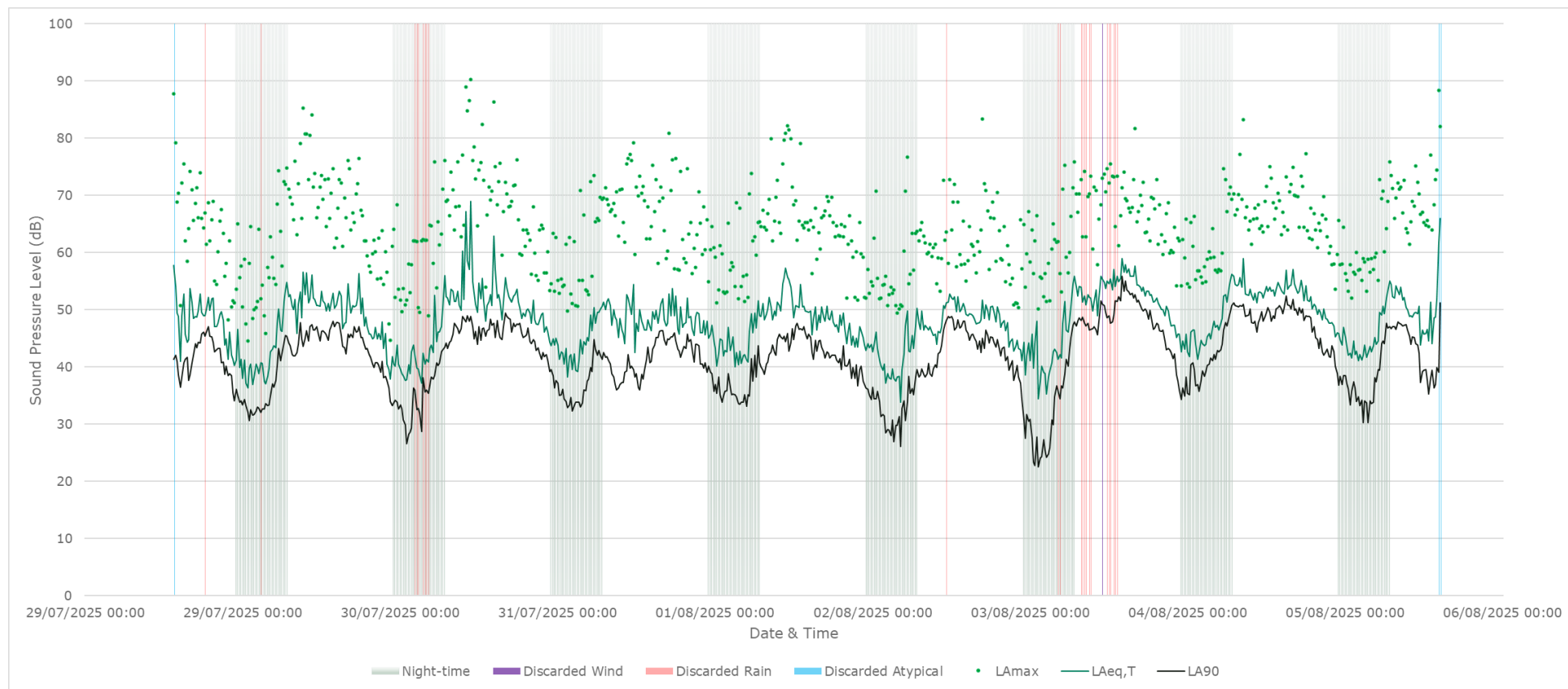
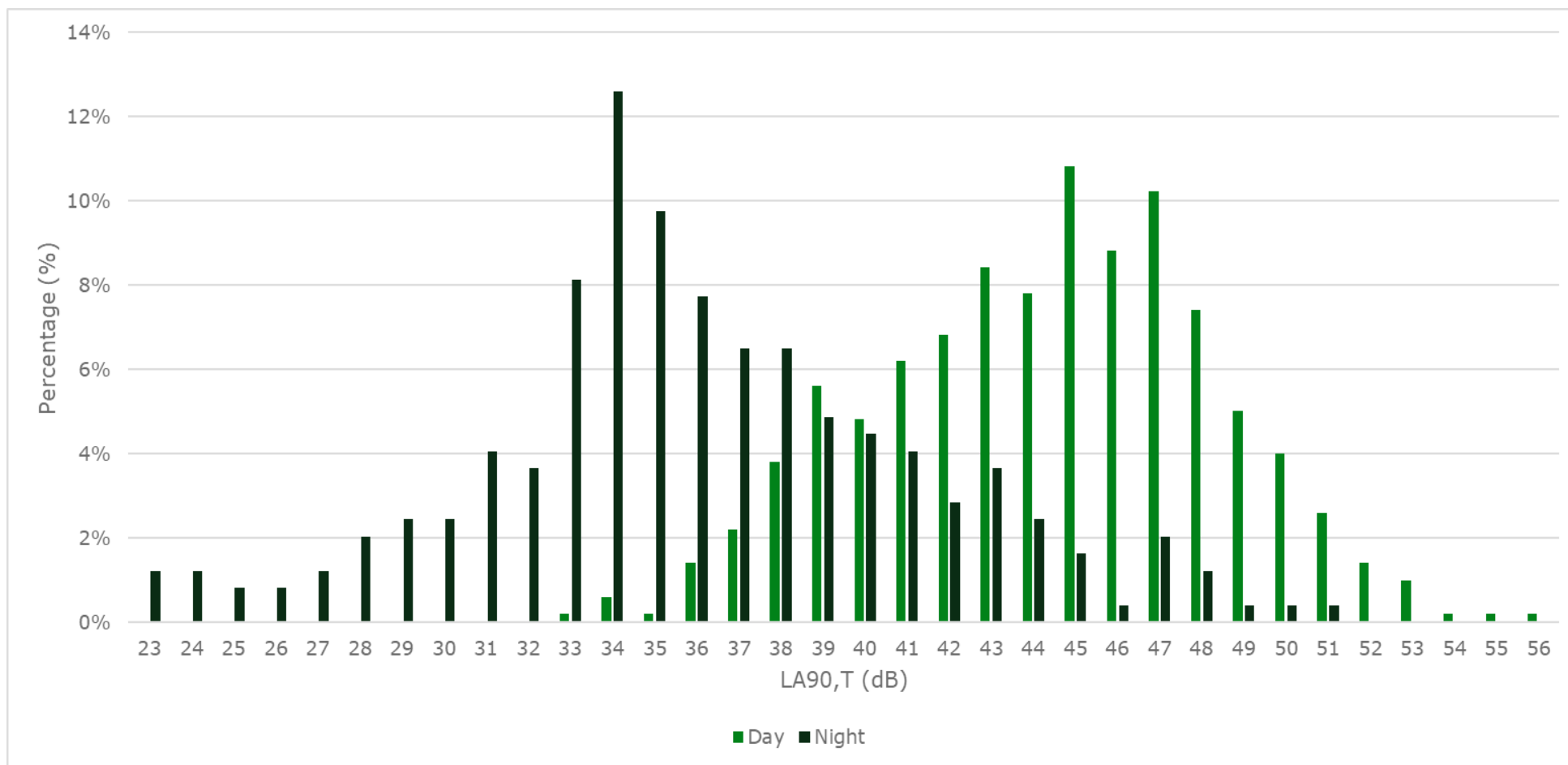


FIGURE 9.7 – DISTRIBUTION OF BACKGROUND SOUND LEVELS DURING THE DAY (07:00-23:00) AND NIGHT (23:00-07:00) AT NML02



NML03 – Drakelow Fall Farm, and Stublach Dairy Farm

- 9.1.6.9 **Figure 9.8** shows the monitoring equipment setup at NML03 **Figure 9.9** presents the 15-minute sound measurements logged over the survey period. Noise levels were monitoring from 15:15 on 29th July until 13:45 on 6th August 2025.
- 9.1.6.10 **Table 9.6** presents the average daytime ambient sound levels for the construction assessment baseline. BS 5228-1:2009 + A1:2014 ABC construction noise level categories have been selected based on the logarithmic average of the ambient sound levels.
- 9.1.6.11 **Figure 9.10** presents the distribution of background $L_{A90,15\text{-minute}}$ sound levels over the day and night-time throughout the survey period. The adopted daytime and night-time $L_{A90,T}$ are 38 dB and 31 dB respectively for the noise sensitive receptors represented by NML03

FIGURE 9.8 – PHOTO OF EQUIPMENT SETUP AT NML03



TABLE 9.6 – AMBIENT SOUND LEVEL FOR THE CONSTRUCTION NOISE ASSESSMENT AT NML03

| Day | Ambient Sound Level LAeq,T [dB] ^a | | |
|--------|--|----------------------------------|--------------------|
| | Day ^b | Evenings & Weekends ^c | Night ^d |
| 29-Jul | 46 | 47 | 44 |
| 30-Jul | 49 | 47 | 44 |
| 31-Jul | 49 | 47 | 44 |
| 01-Aug | 47 | 44 | 45 |
| 02-Aug | 50 | 48 | 45 |
| 03-Aug | - | 47 | 44 |
| 04-Aug | 53 | 48 | 45 |
| 05-Aug | 52 | 47 | 47 |
| 06-Aug | 52 | - | 47 |

Notes:

^a Façade levels (the measurement or calculation of sound levels at a specific distance in front of a building's façade). A of 3 dB is applied to account for the sound reflected from the façade.

^b Weekdays 07:00-19:00 and Saturday 07:00-13:00.

^c Weekdays, 19:00-23:00, Saturdays 13:00-23:00, and Sundays 07:00-23:00.

FIGURE 9.9 – NOISE MONITORING RESULTS AT NML03

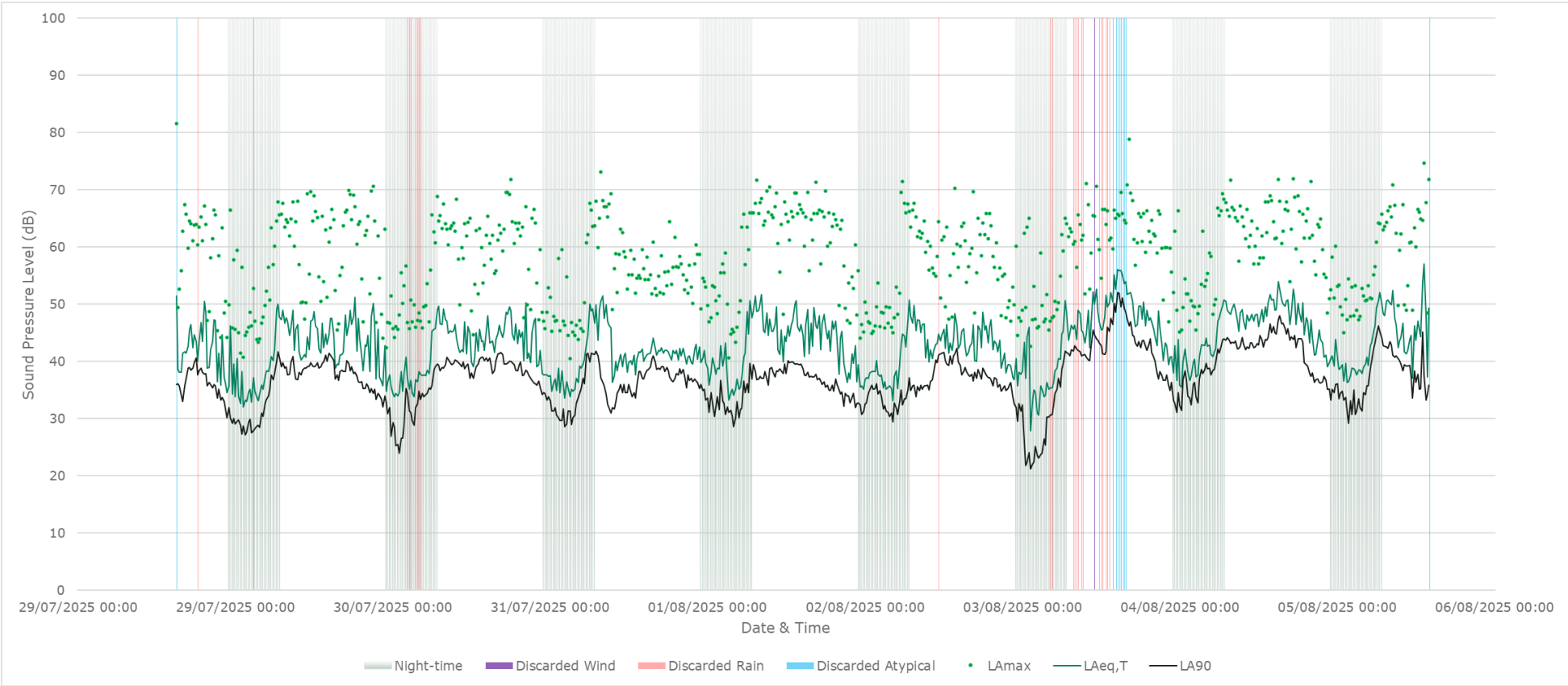
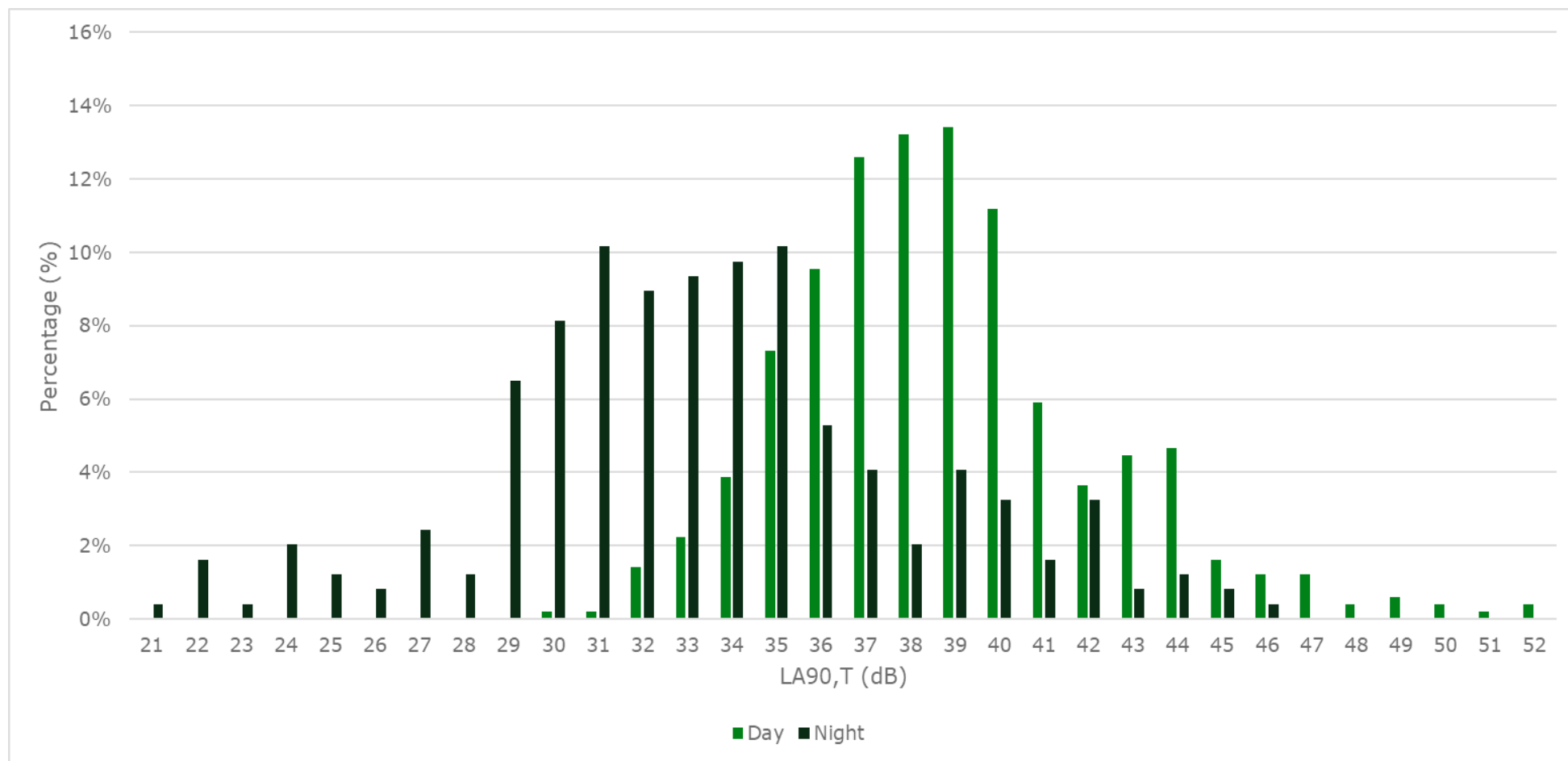


FIGURE 9.10 – DISTRIBUTION OF BACKGROUND SOUND LEVELS DURING THE DAY (07:00-23:00) AND NIGHT (23:00-07:00) AT NML03



NML04 – Brownhayes Farm and Drakelow Gorse Farm.

- 9.1.6.12 **Figure 9.11** shows the monitoring equipment setup at NML04. **Figure 9.12** presents the 15-minute sound measurements logged over the survey period. Noise levels were monitored from 15:45 on 29th July until 12:45 on 6th August 2025.
- 9.1.6.13 **Table 9.7** presents the average daytime ambient sound levels for the construction assessment baseline. BS 5228-1:2009 + A1:2014 ABC construction noise level categories have been selected based on the logarithmic average of the ambient sound levels.
- 9.1.6.14 **Figure 9.13** presents the distribution of background $L_{A90,15\text{-minute}}$ sound levels over the day and night-time throughout the survey period. The adopted daytime and night-time $L_{A90,T}$ are 36 dB and 30 dB respectively for the noise sensitive receptors represented by NML04.

FIGURE 9.11 – PHOTO OF EQUIPMENT SETUP AT NML04



TABLE 9.7 – AMBIENT SOUND LEVEL FOR THE CONSTRUCTION NOISE ASSESSMENT AT NML04

| Day | Ambient Sound Level LAeq,T [dB] ^a | | |
|--------|--|----------------------------------|--------------------|
| | Day ^b | Evenings & Weekends ^c | Night ^d |
| 29-Jul | 48 | 48 | 42 |
| 30-Jul | 51 | 49 | 44 |
| 31-Jul | 51 | 50 | 51 |
| 01-Aug | 51 | 45 | 46 |
| 02-Aug | 51 | 49 | 46 |
| 03-Aug | - | 48 | 46 |
| 04-Aug | 59 | 49 | 49 |
| 05-Aug | 54 | 49 | 49 |
| 06-Aug | 50 | - | 47 |

Notes:

^a Façade levels (the measurement or calculation of sound levels at a specific distance in front of a building's façade). A of 3 dB is applied to account for the sound reflected from the façade.

^b Weekdays 07:00-19:00 and Saturday 07:00-13:00.

^c Weekdays, 19:00-23:00, Saturdays 13:00-23:00, and Sundays 07:00-23:00.

FIGURE 9.12 – NOISE MONITORING RESULTS AT NML04

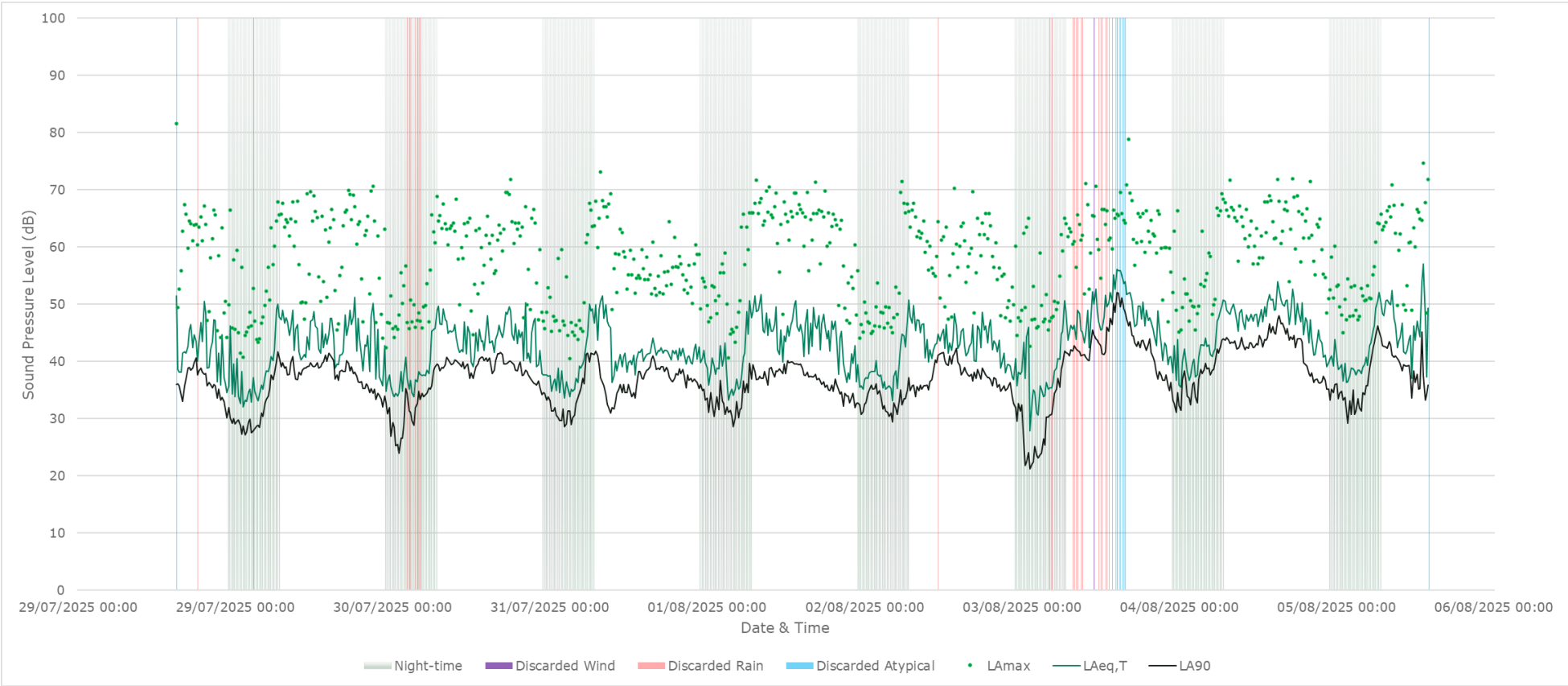
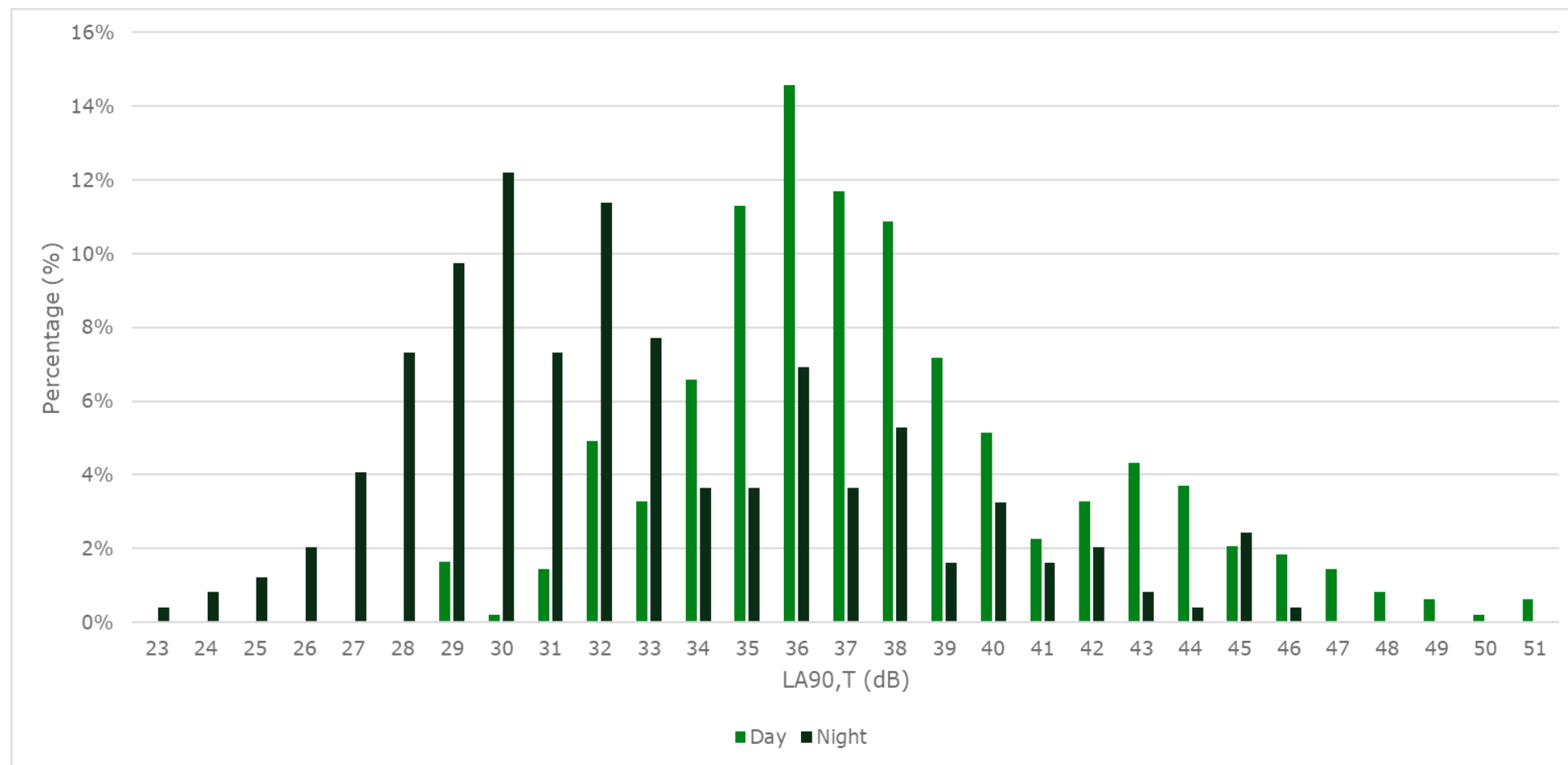


FIGURE 9.13 – DISTRIBUTION OF BACKGROUND SOUND LEVELS DURING THE DAY (07:00-23:00) AND NIGHT (23:00-07:00) AT NML04



NML05 – Crosslanes Farm and Green Lea

- 9.1.6.15 **Figure 9.14** shows the monitoring equipment setup at NML05. **Figure 9.15** presents the 15-minute sound measurements logged over the survey period. Noise levels were monitored from 17:45 on 29th July until 13:00 on 6th August 2025.
- 9.1.6.16 **Table 9.8** – Ambient Sound level for the Construction Noise Assessment at NML05 presents the average daytime ambient sound levels for the construction assessment baseline. BS 5228-1:2009 + A1:2014 ABC construction noise level categories have been selected based on the logarithmic average of the ambient sound levels.
- 9.1.6.17 **Figure 9.16** presents the distribution of background $L_{A90,15}$ -minute sound levels over the day and night-time throughout the survey period. The adopted daytime and night-time $L_{A90,T}$ are 35 dB and 29 dB respectively for the noise sensitive receptors represented by NML05.

FIGURE 9.14 – PHOTO OF EQUIPMENT SETUP AT NML05



TABLE 9.8 – AMBIENT SOUND LEVEL FOR THE CONSTRUCTION NOISE ASSESSMENT AT NML05

| Day | Ambient Sound Level LAeq,T [dB] ^a | | |
|--------|--|----------------------------------|--------------------|
| | Day ^b | Evenings & Weekends ^c | Night ^d |
| 29-Jul | 48 | 48 | 42 |
| 30-Jul | 50 | 45 | 43 |
| 31-Jul | 50 | 47 | 44 |
| 01-Aug | 48 | 43 | 45 |
| 02-Aug | 50 | 49 | 45 |
| 03-Aug | - | 48 | 43 |
| 04-Aug | 52 | 48 | 45 |
| 05-Aug | 55 | 47 | 46 |
| 06-Aug | 51 | - | 45 |

Notes:

^a Façade levels (the measurement or calculation of sound levels at a specific distance in front of a building's façade). A of 3 dB is applied to account for the sound reflected from the façade.

^b Weekdays 07:00-19:00 and Saturday 07:00-13:00.

^c Weekdays, 19:00-23:00, Saturdays 13:00-23:00, and Sundays 07:00-23:00.

FIGURE 9.15 – NOISE MONITORING RESULTS AT NML05

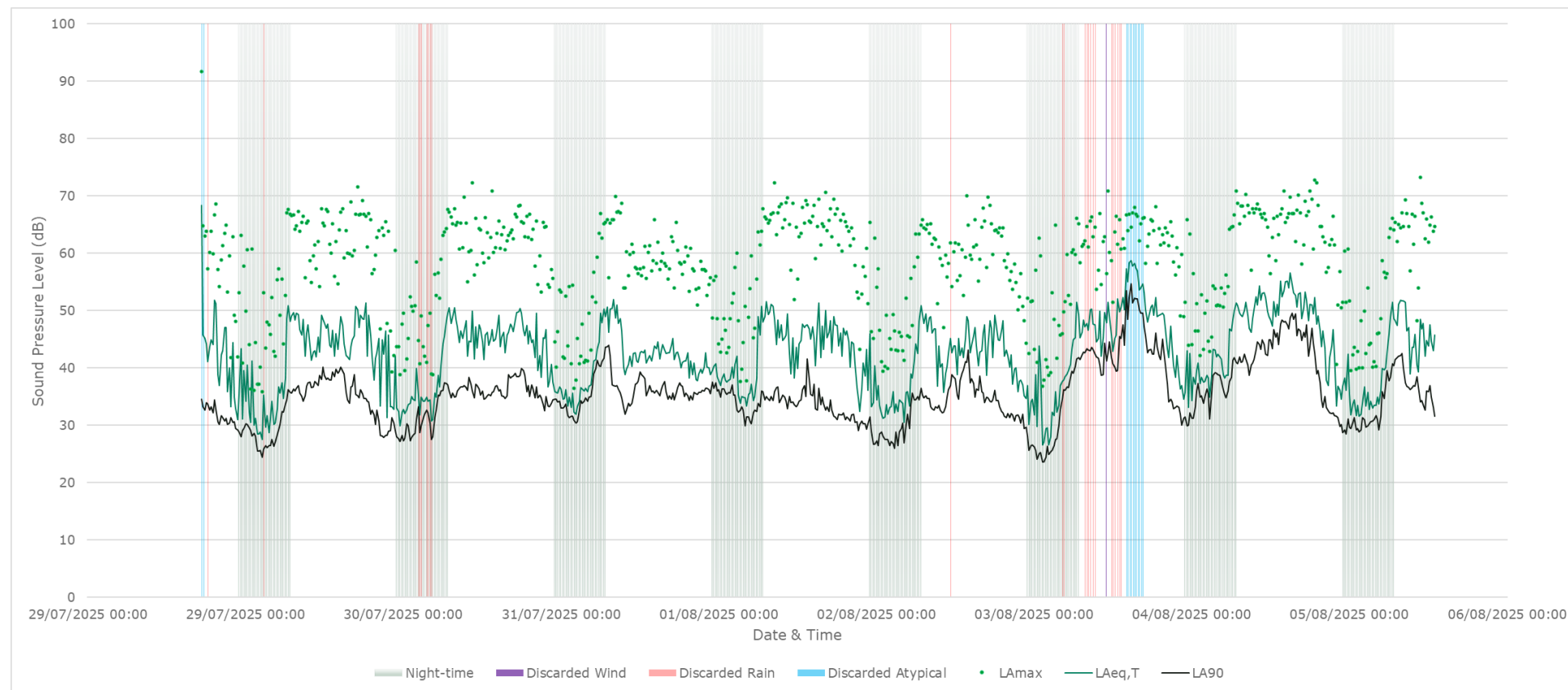
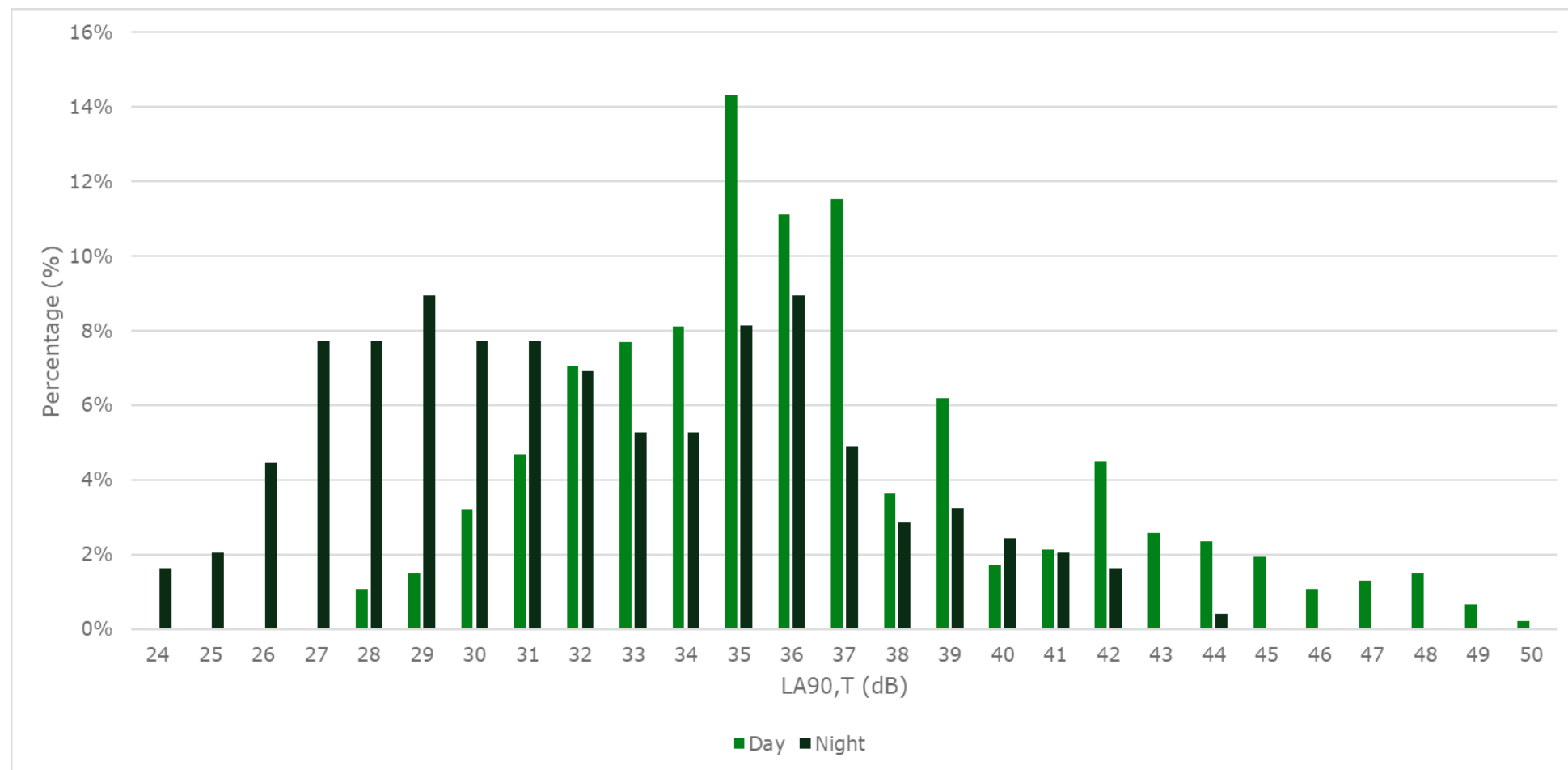


FIGURE 9.16 – DISTRIBUTION OF BACKGROUND SOUND LEVELS DURING THE DAY (07:00-23:00) AND NIGHT (23:00-07:00) AT NML05



NML06 – Yatehouse Green Farm, Yewtree Farm, Dog and Partridge Farm and Higher Green Farm

- 9.1.6.18 **Figure 9.17** shows the monitoring equipment setup at NML06. **Figure 9.18** presents the 15-minute sound measurements logged over the survey period. Noise levels were monitored from 16:45 on 29th July until 12:00 on 6th August 2025.
- 9.1.6.19 **Table 9.9** presents the average daytime ambient sound levels for the construction assessment baseline. BS 5228-1:2009 + A1:2014 ABC construction noise level categories have been selected based on the logarithmic average of the ambient sound levels.
- 9.1.6.20 **Figure 9.19** presents the distribution of background $L_{A90,15\text{-minute}}$ sound levels over the day and night-time throughout the survey period. The adopted daytime and night-time $L_{A90,T}$ are 38 dB and 30 dB respectively for the noise sensitive receptors represented by NML06.

FIGURE 9.17 – PHOTO OF EQUIPMENT SETUP AT NML06



TABLE 9.9 – AMBIENT SOUND LEVEL FOR THE CONSTRUCTION NOISE ASSESSMENT AT NML06

| Day | Ambient Sound Level LAeq,T [dB] ^a | | |
|--------|--|----------------------------------|--------------------|
| | Day ^b | Evenings & Weekends ^c | Night ^d |
| 29-Jul | 48 | 49 | 42 |
| 30-Jul | 50 | 45 | 43 |
| 31-Jul | 49 | 47 | 43 |
| 01-Aug | 47 | 43 | 45 |
| 02-Aug | 50 | 48 | 45 |
| 03-Aug | - | 48 | 43 |
| 04-Aug | 57 | 53 | 45 |
| 05-Aug | 58 | 47 | 51 |
| 06-Aug | 49 | - | 43 |

Notes:

^a Façade levels (the measurement or calculation of sound levels at a specific distance in front of a building's façade). A of 3 dB is applied to account for the sound reflected from the façade.

^b Weekdays 07:00-19:00 and Saturday 07:00-13:00.

^c Weekdays, 19:00-23:00, Saturdays 13:00-23:00, and Sundays 07:00-23:00.

FIGURE 9.18 – NOISE MONITORING RESULTS AT NML06

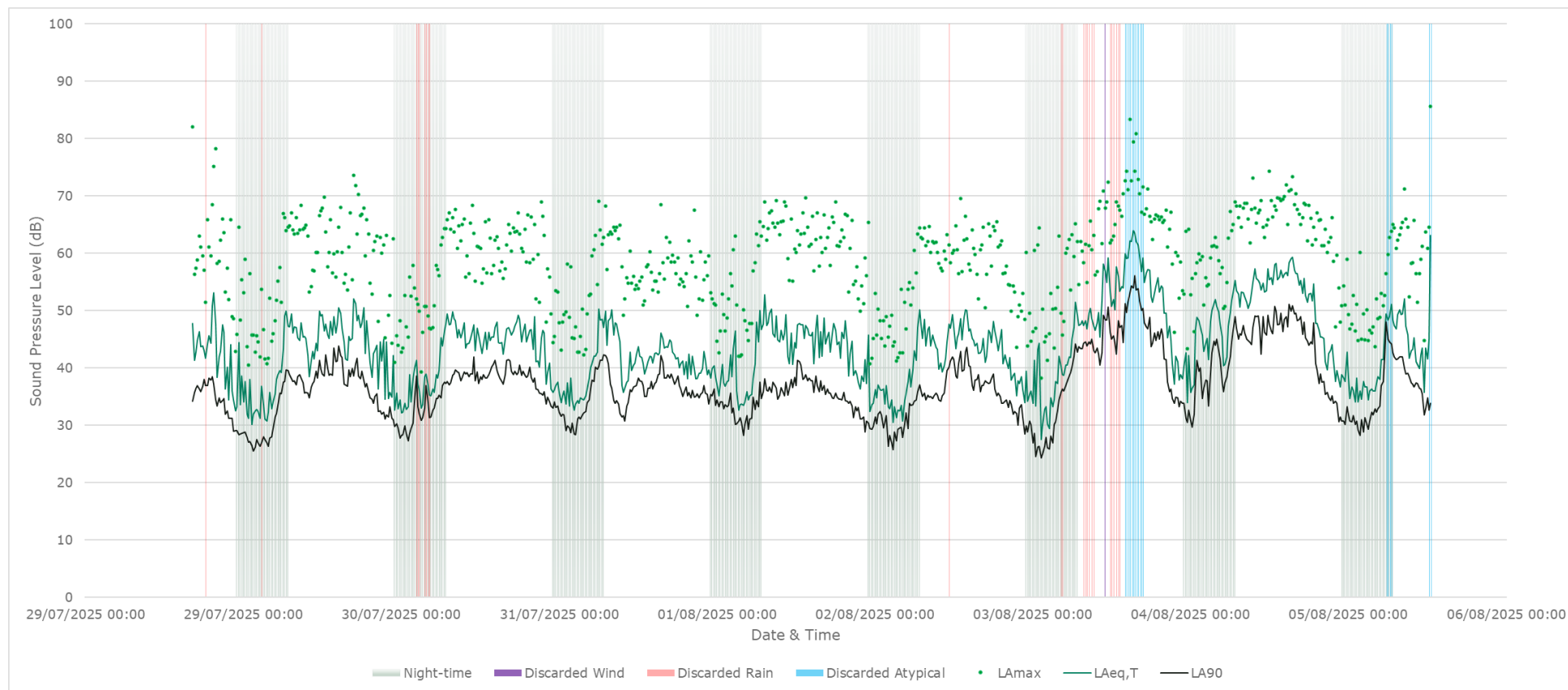
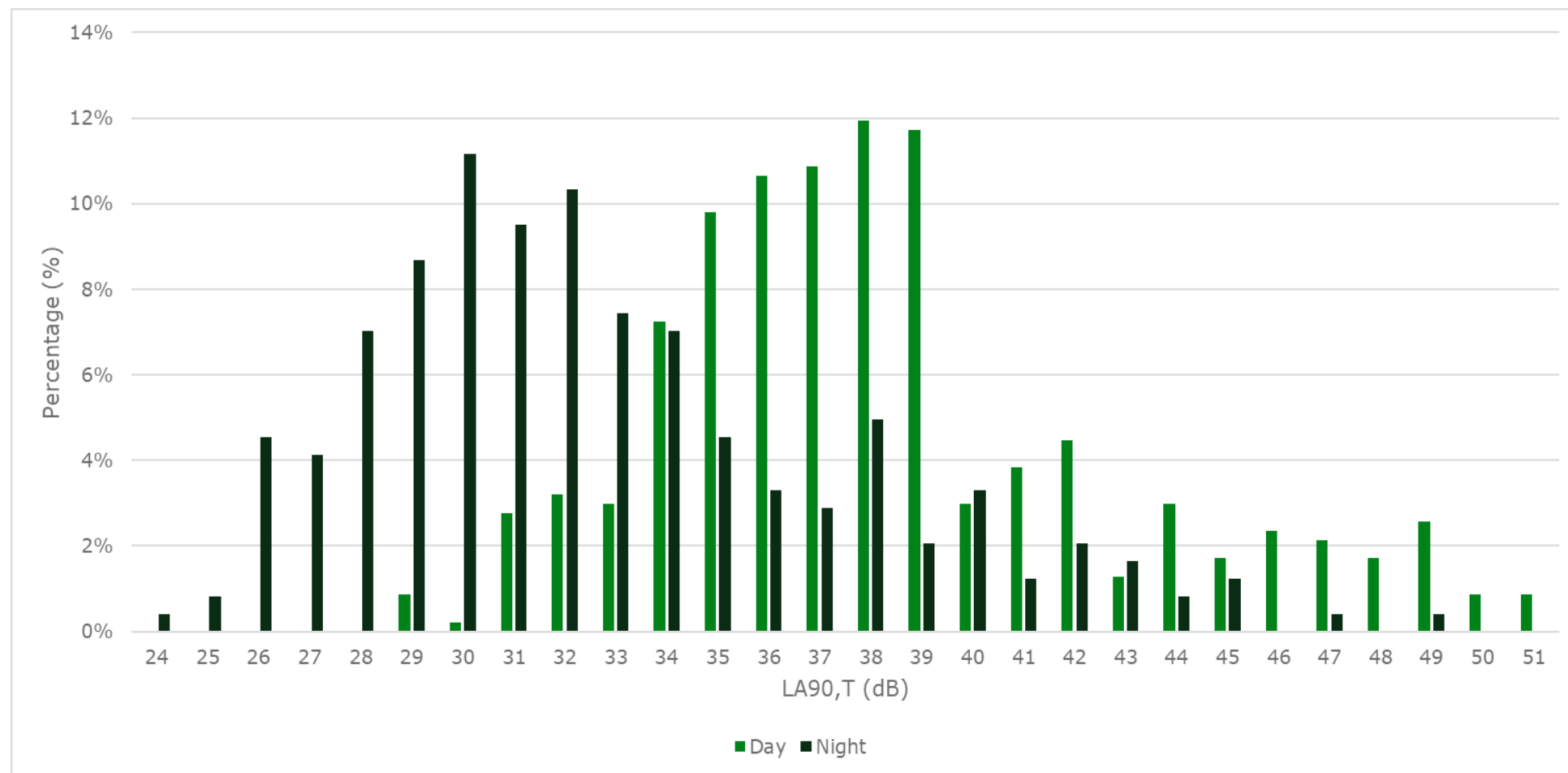


FIGURE 9.19 – DISTRIBUTION OF BACKGROUND SOUND LEVELS DURING THE DAY (07:00-23:00) AND NIGHT (23:00-07:00) AT NML06





ERM HAS OVER 140 OFFICES ACROSS THE FOLLOWING COUNTRIES AND TERRITORIES WORLDWIDE

Argentina

Australia

Belgium

Brazil

Canada

China

Colombia

Denmark

France

Germany

Hong Kong

India

Indonesia

Ireland

Italy

Japan

Kazakhstan

Kenya

Malaysia

Mexico

Mozambique

Netherlands

New Zealand

Panama

Peru

Poland

Portugal

Romania

Singapore

South Africa

South Korea

Spain

Switzerland

Taiwan

Thailand

UAE

UK

US

Vietnam

ERM's London Office

2nd Floor, Exchequer
Court

33 St Mary Axe

London

EC3A 8AA

T: 020 3206 5200

www.erm.com